



## **PUBLIC MEETING – NORTH SYDNEY**

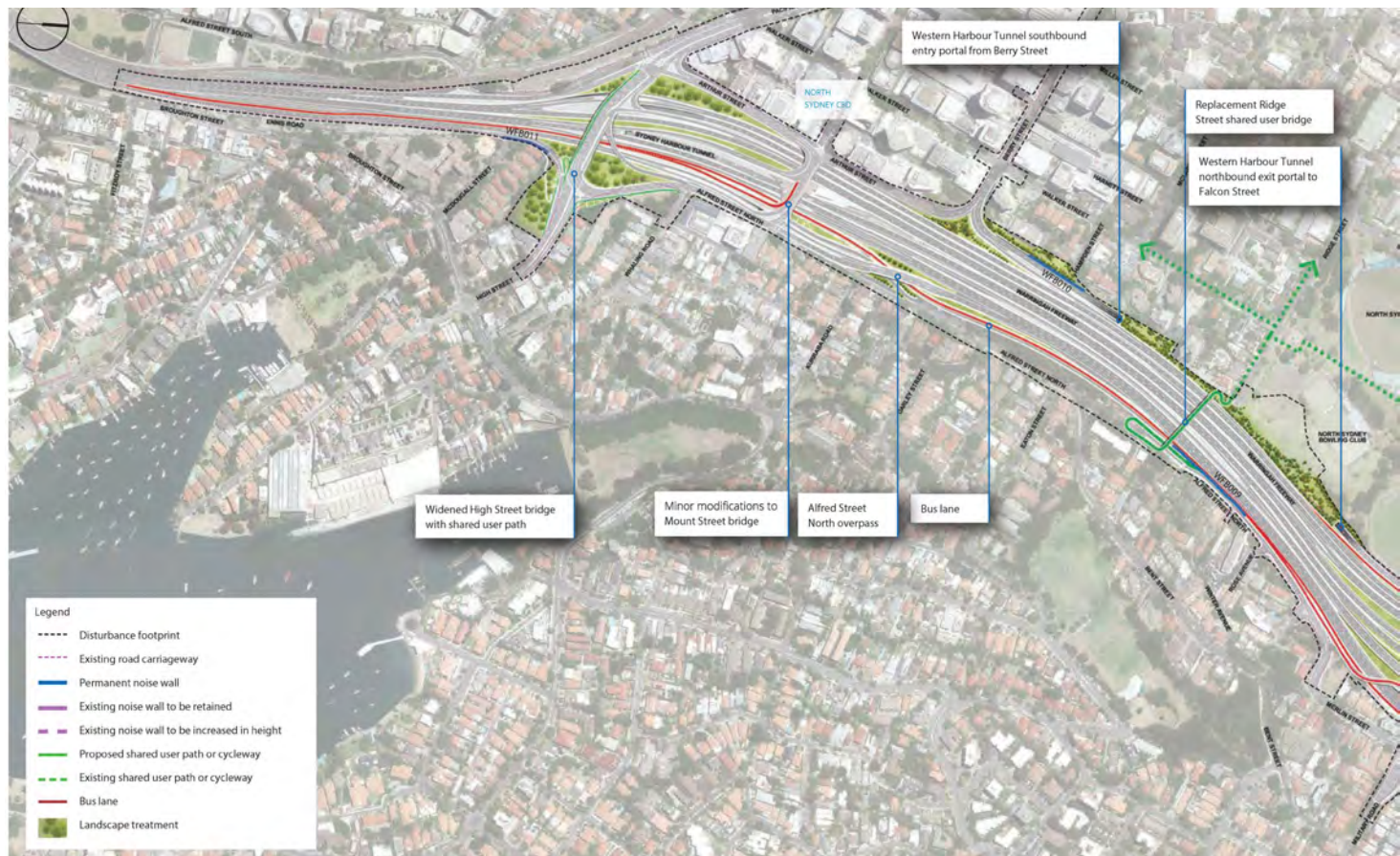
**26 FEBRUARY, 2020**

Presentation by:  
**Paul Walter**

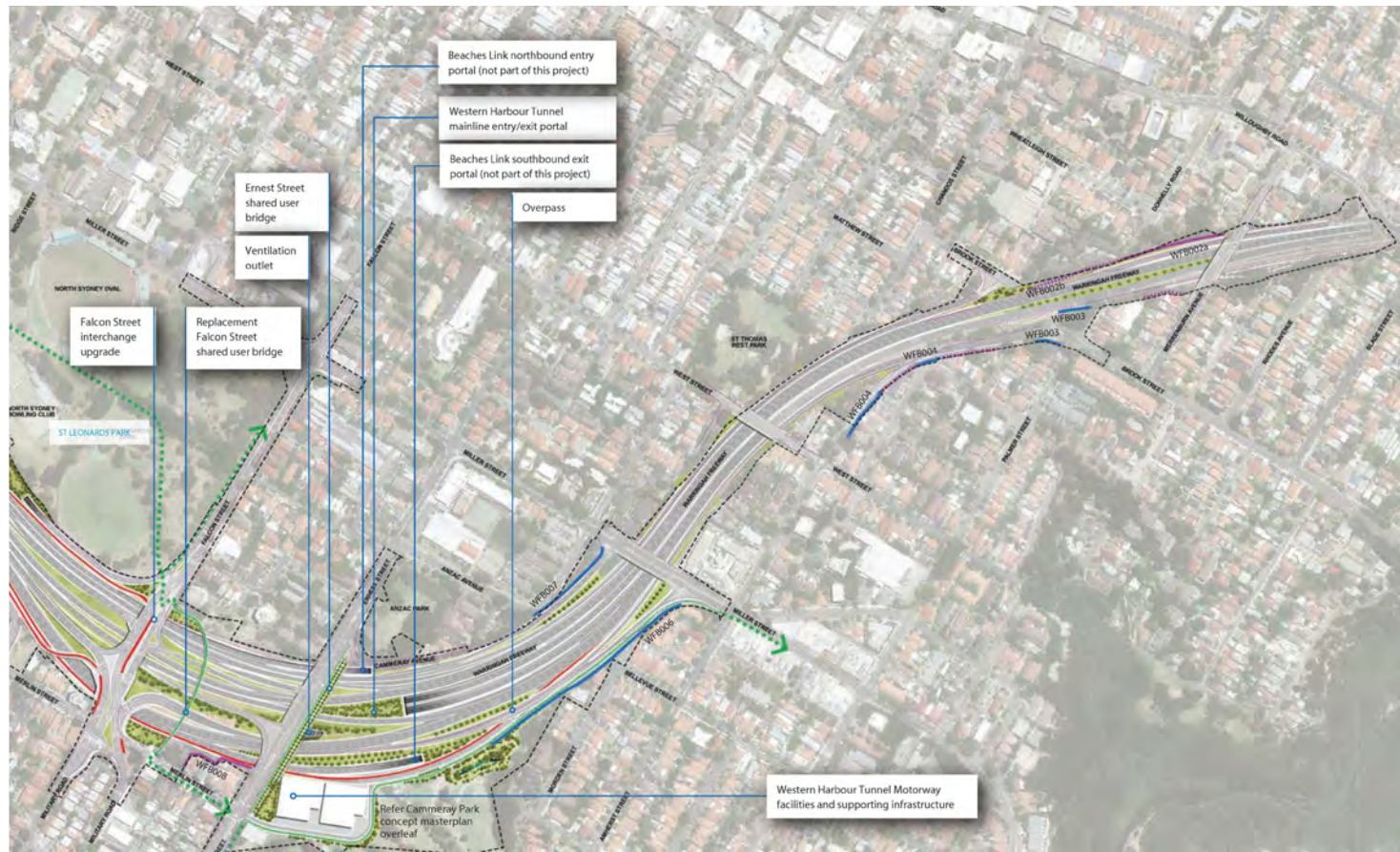
*Chair, Bay Precinct Committee  
North Sydney*



# EIS DESIGN - WARRINGAH MOTORWAY

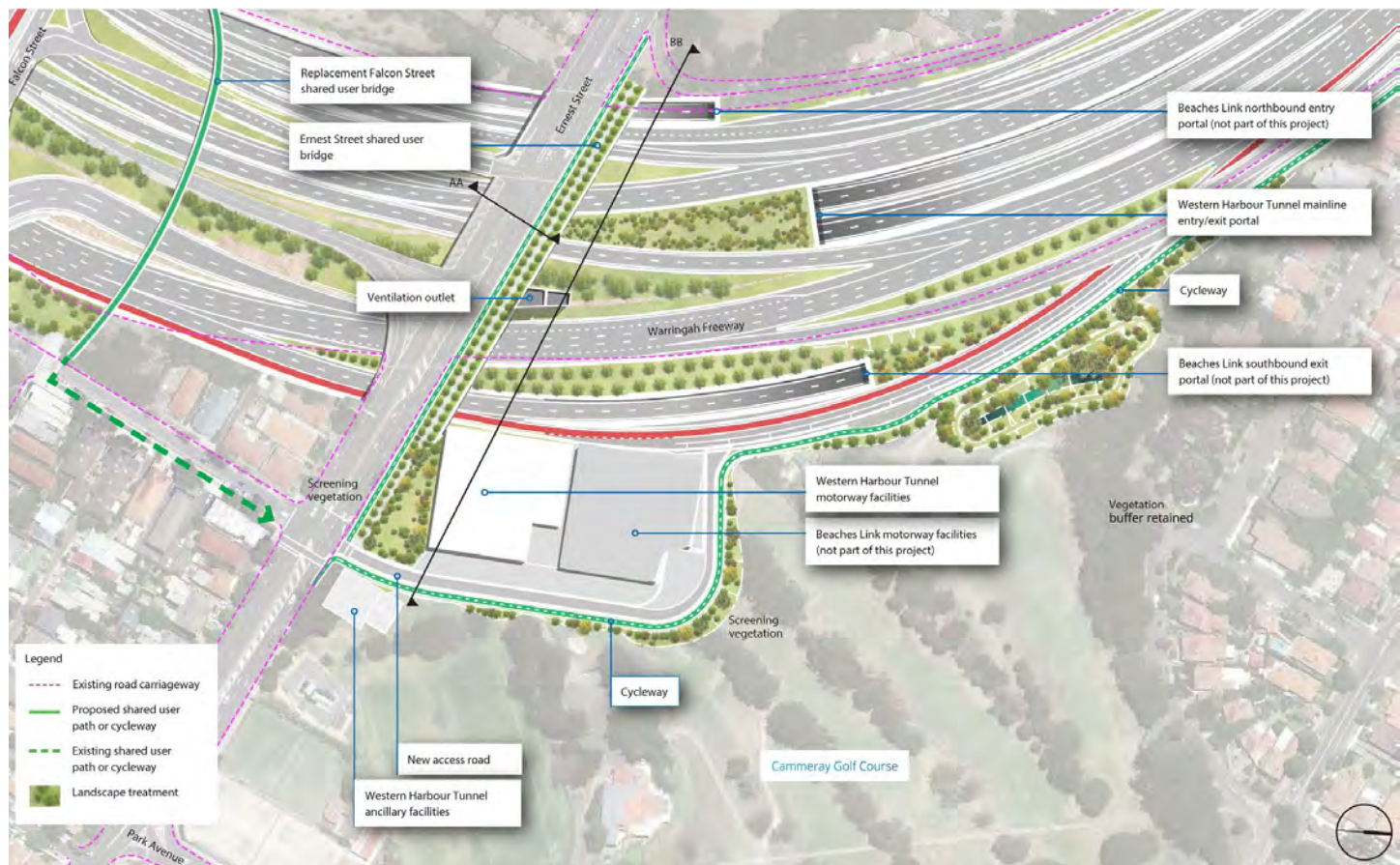


# EIS DESIGN - WARRINGAH MOTORWAY





# CAMMERAY PARK – CONCEPT MASTERPLAN



# CAMMERAY PARK – CONCEPT MASTERPLAN





# Green Grid

*The Green Grid links parks, open spaces, bushland and walking and cycling paths*

## Strategies proposed by GSC

- Greater Sydney Green Grid priority corridors
- Opportunities for connections that form the longterm vision of the network
- Walking and cycling links for transport as well as leisure and recreational trips.



# Green Grid in North Sydney





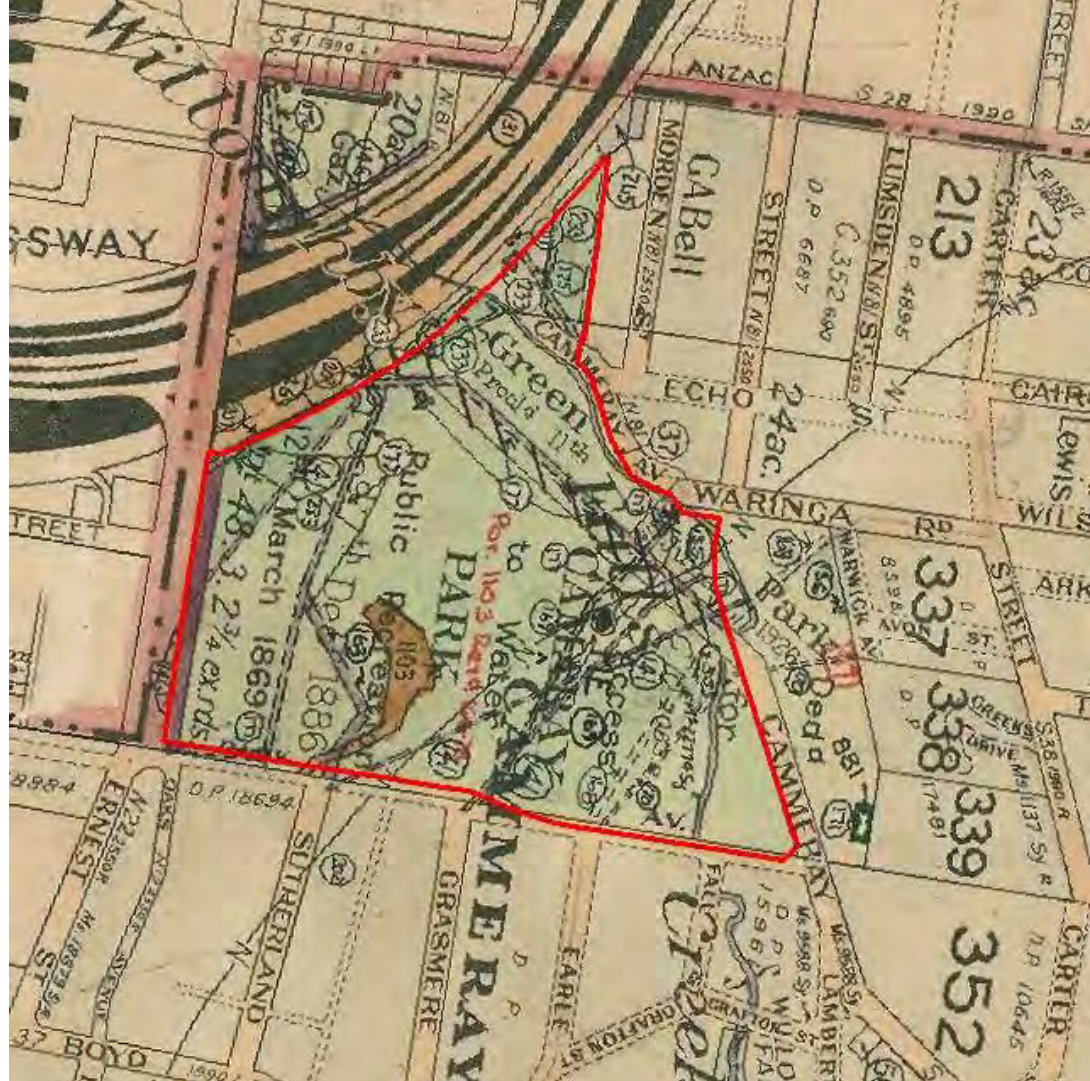
# 1887

- The area is reserved for public recreation and access to water





- Warringah Expressway  
severs green space  
Cammeray Pank and Anzac  
Park



# OPEN SPACE & PARKS

## Existing conditions

- 210 m distance between Anzac Park to Cammeray Golf Course





# OPEN SPACE & PARKS

## Western Harbour Tunnel Proposal

- 2.6 Ha of open space in Cammeray Park & Golf Course will be removed
- Longer distance between Anzac Park to Cammeray Golf Course





# OPEN SPACE & PARKS

## Recommendations

- Landscape cover over Motorway facilities
- Re-connect green space
- 1 Ha of land bridge to replace lost green space
- No net loss of recreation space





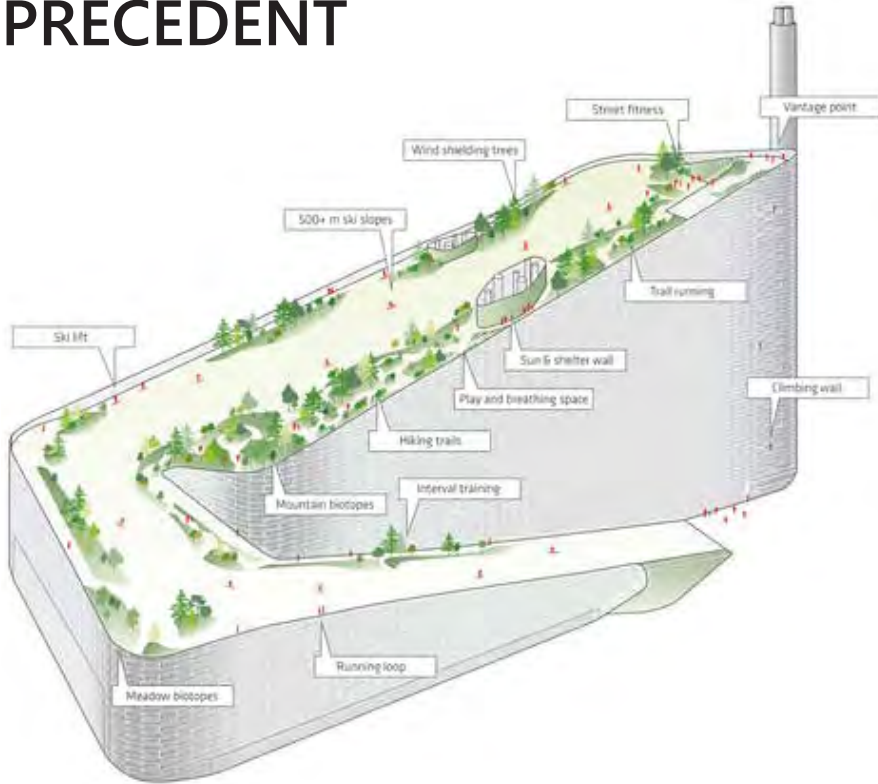
# PRECEDENT



**Central-Wanchai bypass** - Corridor link with urban greening

- Green space over a filtration system

# PRECEDENT



**CopenHill** - Waste-to-Energy Plant

- Public recreation over infrastructure



# PRECEDENT



**CopenHill** - Waste-to-Energy Plant

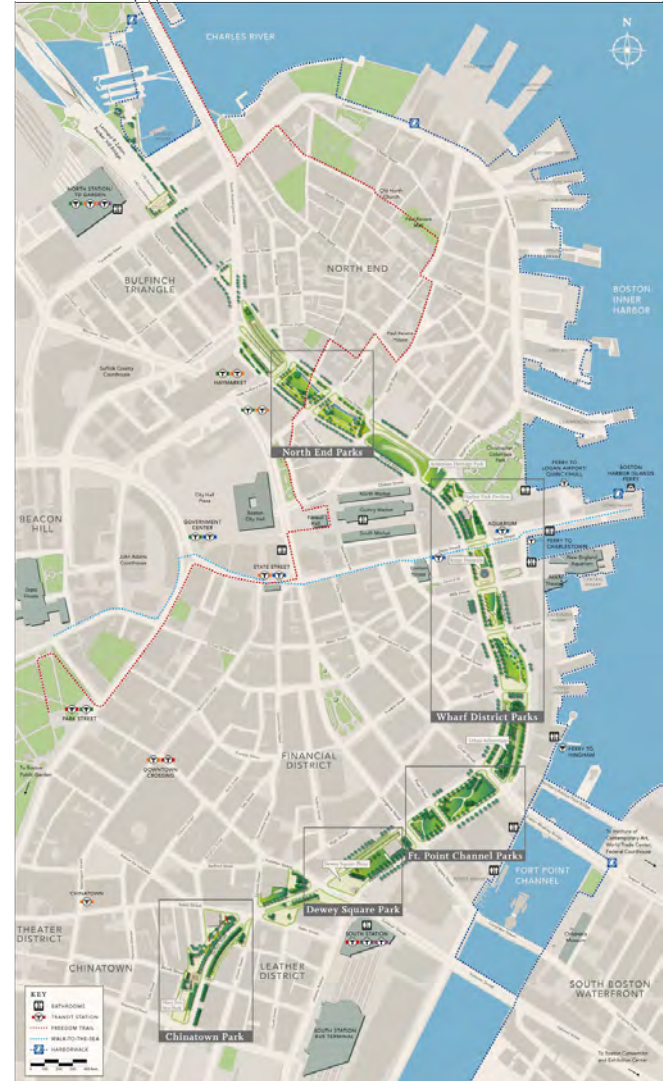




# PRECEDENT



**Boston Big Dig**





# PRECEDENT

## Parks and open space

- The project created more than 120 Ha of new parks and open space
- This includes 11 Ha where the existing elevated highway stood, 42 Ha at Spectacle Island, 16 Ha along the Charles River, and 3 Ha as part of an expanded Memorial Stadium Park in East Boston.
- More than 2,400 trees and 26,000 shrubs were planted at Spectacle Island. Another 2,400 trees and more than 7,000 shrubs were planted.



**Boston Big Dig**

# PRECEDENT



**Houston Memorial Park** - green space link over motorway